

# Welcome to Heritage Hall

Ohio University  
Heritage College of  
Osteopathic Medicine

OHIO  
UNIVERSITY



Heritage  
College of  
Osteopathic  
Medicine



Learning transformed  
for the next generation  
of health care leaders



Heritage Hall is a new academic home for our Athens campus that will anchor the university's future Union Street Green. The new facility makes possible innovative, purpose-built spaces for medical education, as well as fundamental changes to the way we work and improvements to our research and community outreach initiatives. The project was enabled by a \$21 million gift from the Osteopathic Heritage Foundation as part of the OHF *Vision 2020* award.



# Structure and Function Intimately Intertwined With Mind, Body & Spirit

While the red brick exterior reflects the surrounding historic campus buildings, the building design works in concert with the medical school's new curriculum to push the boundaries of modern medical education.

The Pathways to Health and Wellness Curriculum drove the design of the building. The three tenets of osteopathic medicine — mind, body and spirit — are fundamental to the building design, expressed beautifully through its openness, infusion of light and a focus on wellness that fosters collaboration, connectivity and physical activity.

<b>Project</b>	<b>Heritage Hall</b>
<b>Size</b>	<b>120,000 Square Feet</b>
<b>Owner</b>	<b>Ohio University Heritage College of Osteopathic Medicine</b>
<b>Design Architect</b>	<b>Perkins&amp;Will</b>
<b>Architect of Record</b>	<b>DesignGroup</b>
<b>Construction</b>	<b>Donley's</b>
<b>Opened</b>	<b>August 2021</b>
<b>Sustainability</b>	<b>LEED Gold</b>

“Heritage Hall will perpetuate and honor the heritage of osteopathic medicine by creating new and innovative ways for future physicians to empathically find health and healing for those they serve. This facility, coupled with other college priorities, will help solidify the Heritage College’s position as a national leader in medicine, education, research and community service.”

**Terri Donlin Huesman**

President and CEO

Osteopathic Heritage Foundations





Heritage Hall





# Design Drivers

- Support modern medical education.
- Overall flexibility and agility that support learning environments.
- Reflect the values of the new Pathways to Health and Wellness Curriculum.
- Increase interprofessional opportunities for student and faculty interactions and collaborations through shared and public spaces.
- Create space that is more healthful for students, faculty and staff through integration of WELL.
- Create outdoor connections with views, daylighting and greenspace.
- Aesthetic sensibility reflecting homage of campus beauty.
- Professional, pleasing and functional.
- Connectivity to other campuses, OhioHealth, university partners, donors and the broader community.



LEVEL

1

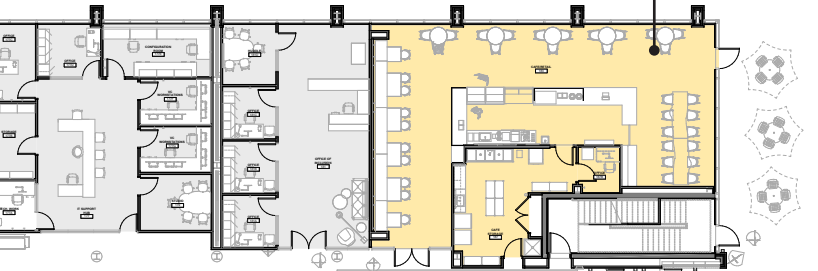
Admissions  
Lobby



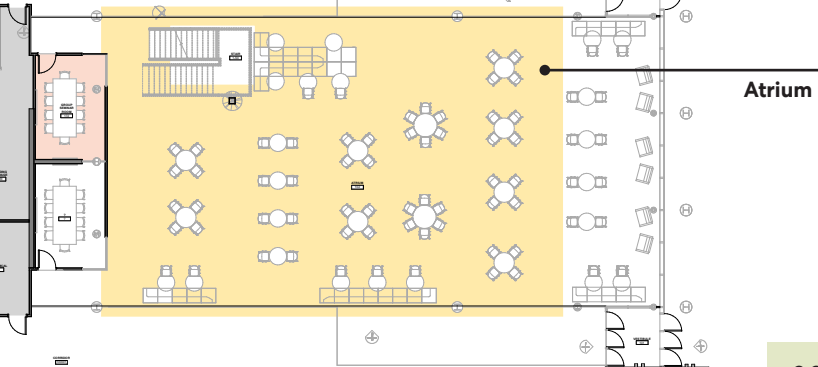
*11 small group rooms are located throughout the building for case-based learning.*



**Heritage College  
Society of Alumni  
and Friends Cafe at  
Factory Street**



**Atrium**



**9,000 square feet of shell space will allow for future growth and expansion.**



**Active Learning  
Classroom 1**

**Student  
Lounge**



Ohio Osteopathic  
Association  
Student Government  
Association Office

Dr. Thomas and  
Barbara Anderson  
Conference Room



Clinical  
Training and  
Assessment  
Center

Clinical Active  
Learning  
Classrooms

Active  
Learning  
Classroom 2

Quiet  
Study  
Space

***The Clinical Training  
and Assessment  
Center features  
14 exam rooms and  
4 simulation rooms.***



Learning  
Resource  
Center

1/8-mile  
walking loop

George Kontogiannis  
Quiet Study Area

Fitness  
Center

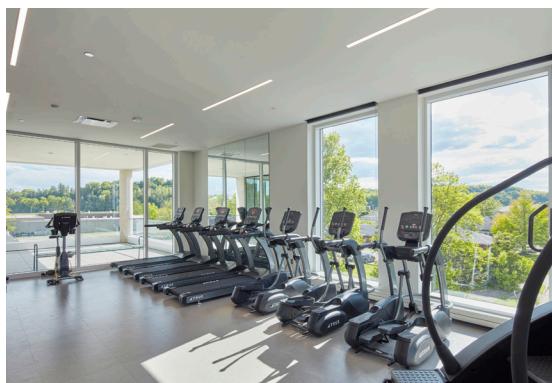
ATRIUM

Mindfulness  
Room

Anatomy Lab

Osteopathic  
Manipulative  
Medicine Lab

Outdoor  
Balcony



*WELL features include fitness and mindfulness spaces, an outdoor balcony and a 1/8-mile walking loop.*



## WELL Certification

WELL is a research-backed system for measuring, certifying and monitoring features of building environments that impact human health, such as air and water quality, nourishment, light, comfort, and support for physical and mental fitness.

By designing to WELL Building Standards®, the Heritage College's wellness philosophy will be imbued into its learning, teaching and working environment. If we are successful in achieving WELL certification later this fall, Heritage Hall will be the nation's first WELL medical education facility.



“The Heritage College is in the midst of the most significant period of growth and change in our history, and these new facilities, designed to meet the needs of a world-class educational program, will be a necessary cornerstone of that transformation as we continue to move ahead.”

**Ken Johnson, D.O.**

Executive Dean, Heritage College of Osteopathic Medicine  
Chief Medical Affairs Officer, Ohio University



**Beth Maxon**

Chief Operating Officer  
Ohio University Heritage College  
of Osteopathic Medicine  
740-593-2500

**Jerry Johnson**

Design Director  
Perkins&Will  
312-755-4553

**Jennifer Horvath**

Managing Principal  
DesignGroup Architects + Planners  
614-557-3086

OHIO  
UNIVERSITY



**Heritage  
College of  
Osteopathic  
Medicine**